



**TRAILS COMMITTEE
PENETANGUISHENE FIRE DEPARTMENT
2 ROBILLARD DRIVE
TUESDAY, JUNE 11TH, 2024 AT 4:00 PM**

AGENDA

Page

1. CALL TO ORDER

2. DECLARATION OF PECUNIARY INTEREST

3. ADOPTION OF AGENDA

- i) Trails Committee Agenda
Re: June 11th, 2024

Recommended Action: THAT the Trails agenda of June 11th, 2024, be approved.

4. ADOPTION OF MINUTES

3 - 8

- i) Trails Committee Minutes
Re: April 2nd, 2024

Recommended Action: THAT the Trails minutes from the meeting of April 2nd, 2024, be adopted as presented.

5. NEW BUSINESS

9 - 23

- i) Update from A. Betty, Director of Planning and Community Services
Re: Parking Study Consultation

Recommended Action: For information and discussion.

24 - 32

- ii) Update from S. Desjardins
Re: Trails Connecting Communities Program

Recommended Action: For information.

33 - 48

- iii) Previous Trail Audit Results

Recommended Action: For information.

49 - 50

- iv) Audit Tool

Recommended Action: For discussion.

**Town of Penetanguishene
Trails Committee Agenda**

Page

6. BUSINESS ARISING FROM THE MINUTES

7. OTHER BUSINESS

51 - 52 i) Approved Workplan

8. SITE VISITS

53 - 54 i) Walk of the Payette Trails

9. TRAILS PROMOTION & PARTNERSHIPS

55 i) Trail Day Event

10. TRAIL MAINTENANCE

11. TRAIL EXPANSION/ENHANCEMENT

12. ANNOUNCEMENTS

56 i) Annual Board and Committee Appreciation Event November 27th, 2024

13. NEXT MEETING

14. ADJOURNMENT



**TRAILS COMMITTEE
TOWNHALL COMMITTEE ROOM/ZOOM
TUESDAY, APRIL 2, 2024 AT 4:30 PM**

MINUTES

Present:

**Freida Baldwin
Karen Chaplin
Robert Tschirhart
Mary Brodeur
Patrick Murray (attended for the first 10 minutes)
Terri Brophy (attended at 3:18 p.m. and left the meeting at 3:45 p.m.)
Suzanne Marchand, Councillor**

Absent:

Kristyn Landry

Also Present:

**Sherry Desjardins, Director of Recreation and Community Services
Cole Belcourt, Events Coordinator
Marla Bailey, Recreation Supervisor**

- 1. CALL TO ORDER**
The meeting was called to order at 3:03 p.m.
- 2. WELCOME AND INTRODUCTION**
Roundtable introductions were completed and new members were welcome to the Committee.
- 3. DECLARATION OF PECUNIARY INTEREST**
None were declared.
- 4. ADDITION TO THE AGENDA**
 - i) Trails Committee Agenda
Re: April 2nd, 2024**
M. Brodeur asked if she could add the 'Bike Lending Program' to the agenda. It was added at the end of "Other New Business".

Town of Town of Penetanguishene
Trails Committee Minutes

Moved by F. Baldwin and Seconded by M. Brodeur

AND THAT the Trails agenda of April 2nd, 2024, be approved.

CARRIED

5. ADOPTION OF MINUTES

i) **Trails Committee Minutes**
Re: September 27th, 2024

Moved by K. Chaplin and Seconded by S. Marchand

Action: THAT the Trails Committee minutes from the meeting of September 27th, 2023, be adopted as presented.

CARRIED

ii) **Trails Committee Minutes**
Re: December 19th, 2023

Moved by S. Marchand and Seconded by M. Brodeur

Recommended Action: THAT the Trails minutes from the meeting of December 19th, 2023, be adopted as presented.

CARRIED

6. UNFINISHED BUSINESS

i) **Update from F. Baldwin**
Re: Ganaraska Hiking Trail

F. Baldwin provided an update on the completion of the Ganaraska Hiking Trail as well as an upcoming Ribbon Cutting Ceremony on April 13th. F. Baldwin is waiting on Bryan Murray for an update on where to direct the hike to Thompson Road from the forest.

7. NEW BUSINESS

Trans Canada Trail Funding

i) **Update from S. Desjardins, Director of Recreation and Community Services**

Town of Town of Penetanguishene
Trails Committee Minutes

Re: French Drain & Recognition Event

The Trans Canada Trail will be partly funding the installation of a french drain along the trail near the Overhead Bridge Road. The Committee was asked to share their ideas for a funding recognition event. The Committee agreed that a planting day with a day camp along the section of the trail was a good option. Another idea shared included adding a bee hotel.

ii) **Update from S. Desjardins, Director of Recreation and Community Services**

Re: Trail Care Grant

The Committee was updated on an application made to reestablish a limestone surface on a secondary trail off the TCT in Rotary Champlain Wendat Park. The Committee was asked to share ideas for future funding applications for this annual small micro grant. Particularly those that could involve volunteers. Ideas discussed include creating a medicine wheel garden or other Bee City initiative. Committee members are encouraged to share ideas at any time for future applications.

Action: For future applications.

iii) **Update from S. Desjardins, Director of Recreation and Community Services**

Re: Signage Grant

S. Desjardins provided an update to the Committee on funding secured from the Trans Canada Trail to complete maintenance on two signage kiosks along the trail. The sign will also be updated. S. Desjardins will circulate drafts electronically for comment before going to print.

Action: Staff to share draft signs. Members to provide feedback.

iv) **Update from M. Bailey, Recreation Supervisor**

Re: Trails Day - June 1st, 2024

M. Bailey expressed the Town's desire to celebrate Trails Day on June 1st and shared ideas with the Committee as well as sought

Town of Town of Penetanguishene
Trails Committee Minutes

feedback. Discussion resulted in the best option being a guided trail walk through the Thompson Forest pending County approval.

v) **OTHER NEW BUSINESS**
County of Simcoe - Tourism and Sport Grant Application
Re: Signage

The Committee was informed that an application was sent to the County for funding to update the trails signage on the Copeland Trail, the Tom Coffin Trail as well adding Rotary Champlain Wendat Park trail maps on pedestal signs at key access points to the park. Should funding be approved, staff will work on draft signage and plans to share with the Committee for feedback. F. Balwin and M. Brodeur were interested in learning more about the process used and RTO guidelines. S. Desjardins, F. Baldwin and M. Brodeur will set up another time to meet and discuss.

vi) **Update from S. Desjardins, Director of Recreation and Community Services**
Re: E-Bikes Consultant

The Committee was informed about an initiative between the County, the Town, the Town of Midland and Townships of Tiny and Tay to co-host an e-bike information workshop for staff and elected officials that will be held in Penetanguishene. A consultant from Stuckless Consulting will be presenting the workshop as well as be a guest speaker at the Town's Senior's Information Day on June 6th to provide education about various e-bikes and laws including the benefits of pedal-assist bikes. Total Sports has agreed to help make demo bikes available for those interested in learning more about pedal-assist. The Committee is pleased with the initiative and supportive of a North Simcoe approach. There is no recommendation at this time to implement an e-bike policy; however, the Committee would like the item added to the Work Plan to not lose sight of it and to continue making education a priority.

Action: Staff to add e-bikes as s work plan item.

vii) **2024 Work Plan**

Town of Town of Penetanguishene
Trails Committee Minutes

The Committee added e-bikes to the Work Plan as well as revisiting old trails audits. The Work Plan was approved with the revisions.

Action: Bring work plan forward for Council approval.

viii) **Update from M. Brodeur**
Re: Bike Lending Program

M. Brodeur shared information about a bike lending program operating out of the Midland Public Library. The program would be interested in any other potential partners where bikes could be loaned to residents in need. Anyone with appropriate contacts, please connect them to M. Brodeur or share the opportunity.

Action: Anyone with appropriate contacts, please connect them to M. Brodeur or share the opportunity.

8. ANNOUNCEMENTS AND INQUIRIES

i) **Bike Friendly Businesses Workshop**
S. Desjardins shared information.

9. NEXT MEETING

Next meeting: June 11th at 4:00 p.m. - Meet at the Penetanguishene Fire Department for a walk of the Payette Trails and meeting on site following at the firehall. S. Desjardins to confirm with remaining committee members.

Action: S. Desjardins to confirm with remaining committee members.

10. ADJOURNMENT

The meeting was adjourned at 4:28 p.m.

CHAIR

Town of Town of Penetanguishene
Trails Committee Minutes

RECORDING SECRETARY



Penetanguishene Parking Strategy

Trails Committee

June 11, 2024

Project Team Introductions

LEA Consulting Ltd.

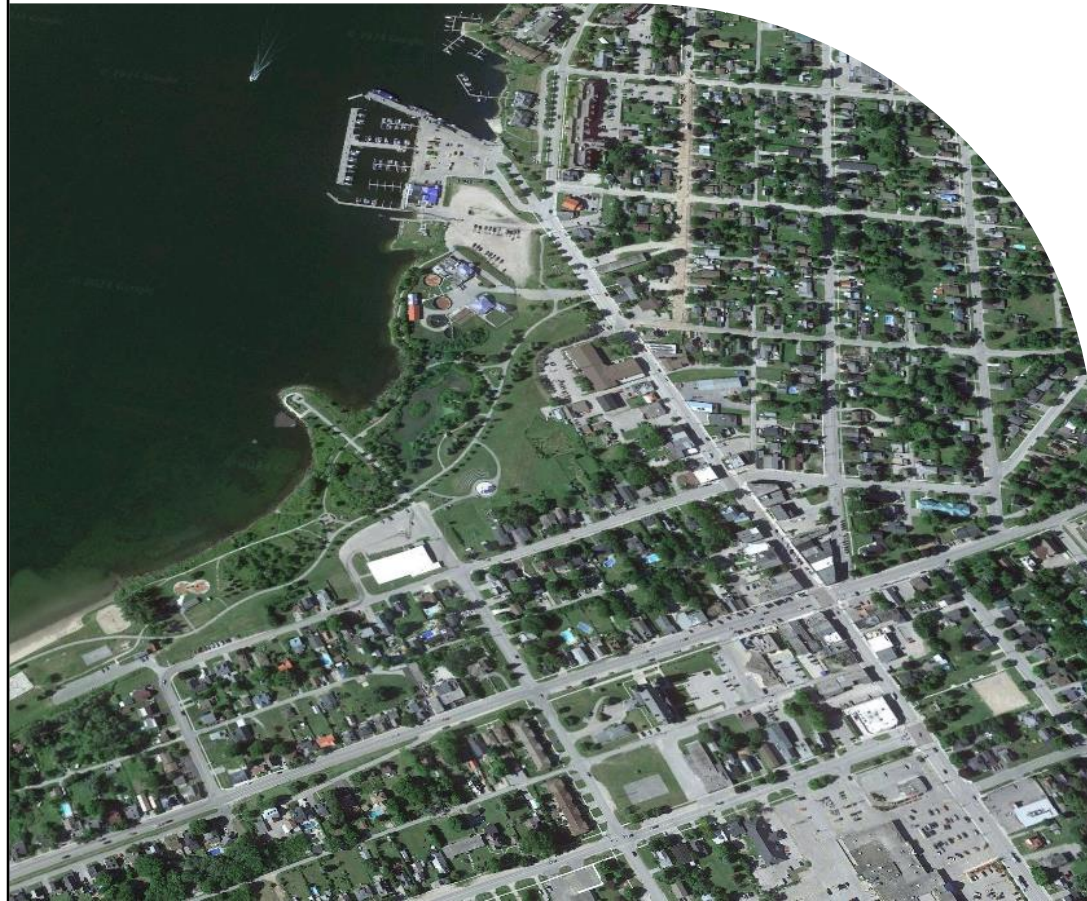
- Christopher Sidlar - Project Manager
- Robert Keel - Deputy Project Manager
- Christy Leung - Planning Lead





Project Background

Study Area



- Key focus areas:
 - Downtown Penetanguishene
 - Town Dock

Project Background

- The Town of Penetanguishene is undergoing a Parking Strategy study to develop effective parking strategies to meet the current and future needs of the local community
- The Parking Strategy study will review current parking policies, operations, and monitoring efforts to develop improved by-law regulations, recommend enhanced enforcement procedures, and identify opportunities for parking optimization within the Town

Purpose and Goals of the Parking Strategy

- Optimize current downtown parking supply to repurpose underutilized surface lots for new developments and community space that will create a more vibrant and pedestrian-friendly downtown
- Develop an improved policy framework that addresses identified parking issues and meets the needs of existing and future local businesses, residents, and visitors
- Develop context specific strategies to manage parking needs at the Town Dock



Parking Strategy Study

Parking Strategy Study (Task 1-2)

Task 1 & 2: Project Initiation & Stakeholder Consultation

- Online Parking Survey - generate input from key stakeholders to identify parking issues, concerns, and experiences with current parking conditions
- Consultation with Key Stakeholders - opportunity for interested stakeholders and business owners to provide initial commentary on existing conditions and desired guiding principles for the Parking Strategy study

Parking Strategy Study (Task 3)

Task 3 (Phase 1): Existing Conditions, Facilities, and Utilization

- Existing Policy and Best Practice Review - review existing Town parking management standards and best practices from comparative municipalities on parking management and enforcement
- Existing Inventory and Parking Demand - confirm existing on- and off-street supply and analyze existing parking count data for utilization, capacity, and demand of all existing parking facilities
- Accessible Parking Inventory Review - conduct a qualitative assessment of accessible parking within Downtown Penetanguishene

Parking Strategy Study (Task 4)

Task 4 (Phase 2): Future Parking Forecasting

- Gaps in Parking Availability - determine areas of over/under allocation and parking hot spots
- Forecast Future Intensification - forecast future parking demand using parking count data, employment growth projections, and planned development
- Recommend Strategies to Optimize Parking - identify opportunities to optimize parking supply and amend existing policies and standards, focusing on reducing auto dependency and encouraging active modes of transportation

Parking Strategy Study (Task 5-6)

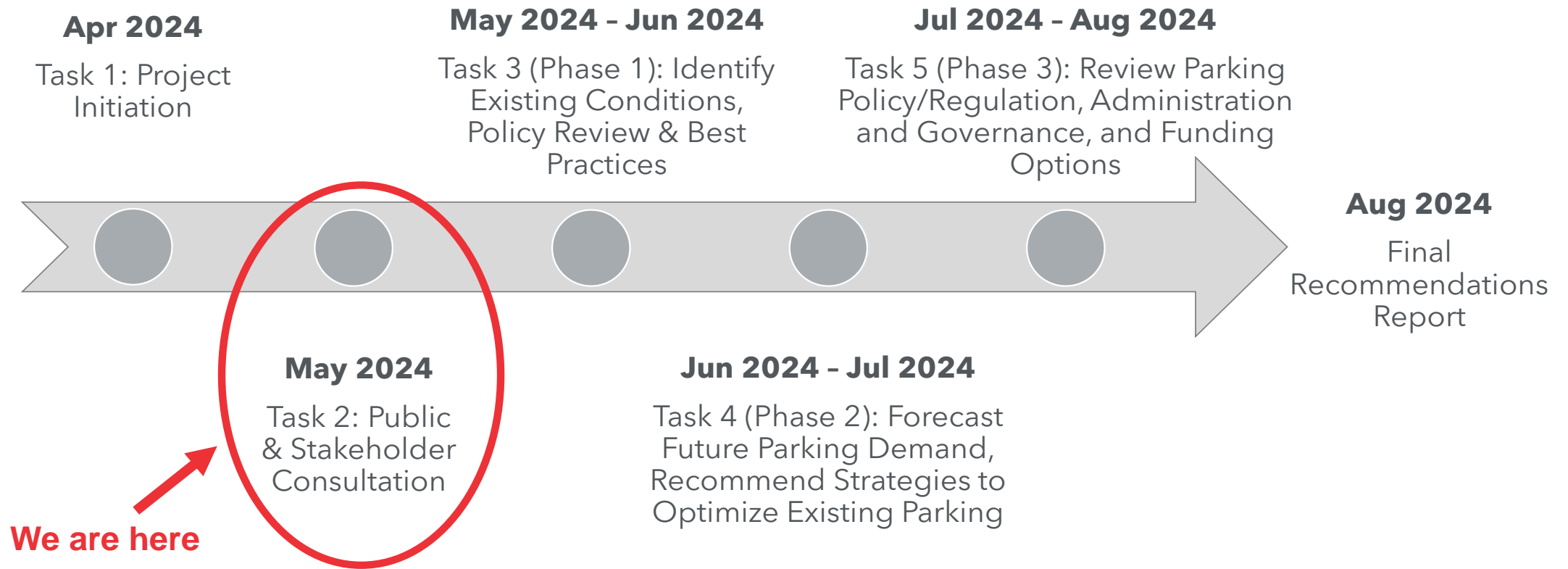
Task 5 (Phase 3): Review Parking Policy/Regulation, Administration and Governance, and Funding Options

- Parking Management and Enforcement Procedures – review of current operation/enforcement strategies and best practices from comparative communities
- Parking Management Funding Review – review of funding for parking related capital projects (Development Charge (DC) Reserve Fund, cash-in-lieu payment)

Task 6 (Phase 4): Documentation

- Recommendations and Documentation – compile findings and recommendations into a Parking Strategy study report

Next Steps





Key Discussion Questions

Key Discussion Questions

- What are the biggest Town-wide parking challenges experienced in Penetanguishene?
- Have you encountered challenges with on-street parking within Downtown Penetanguishene? If so, what are the challenges?
- What would make the parking experience in Downtown Penetanguishene better?



Trails Connecting Communities Program

April 22, 2024



How the Program Works

- The Trails Connecting Communities Program (TCCP) is an program where the County provides grants to applicants for projects to i.e. improve trail systems and interconnect the County through a large trail network. The County matches the contributions made by the municipality, currently, to a maximum of 30k.
- The County of Simcoe is piloting changes to the TCCP to help applicants utilize County funds in a tiered system. The tiered system proposes 3 tiers to fund small, medium, and large-scale projects.
- The budget for TCCP has increased in 2024, and the County is piloting 3 funding tiers; 15k max, 50k max, and 100k max., depending on project type, while still matching applicant contributions.
- The tiered system hopes to achieve more success by leveraging County funds for larger strategic projects and provide opportunities to municipalities to strategically plan and connect inter-municipally.
- The following slides outline the pilot project, including the proposed intake window for 2024.



What's staying the same

- Eligibility requirements will remain the same
- Application and submission requirements will remain the same
- Project closeout and letter of substantial completion will remain streamlined
- County will continue to fund up to 50% of the total eligible costs, whereby the County matches the municipal contributions.
- It remains a reimbursement program i.e. applicants get reimbursed after their project spending and closeout.

What's Changing

- The total County funding is now up to \$300,000 per year. The program funding is broken up into funding tiers:
- **Tier 1 – a maximum grant of \$100,000**
 - Projects may include major capital projects that create new facilities or refurbish major infrastructure. These projects will require major funding towards example, bridge replacements, installation of underpasses, trail/road realignments, maintain trail usage, comprehensive parks/recreation master plans, strategic mobility plans, etc. Does not include maintenance.
- **Tier 2 – a maximum grant of \$50,000**
 - Projects may include large undertakings of road cycling facilities that connect settlements with the rural areas, earthworks to create a new trail connection inter-municipally or municipal partnerships, safety wayfinding, making trail components AODA compliant, comprehensive parks/recreation master plans, strategic mobility plans, etc. Does not include maintenance.
- **Tier 3 – a maximum grant of \$15,000**
 - Projects may include trail head configuring and signage, safety, fencing repairs or installations, trail furniture, trail technical and feasibility studies, maintenance, etc.



What's Changing

- Similar to previous years, future program intake will commence in January of each year; County staff intend to start a January intake in 2025. All closeouts will take place during the month of December.
- County staff will reach out to stakeholders in the fall prior to the intake for intro discussions/pre-consultations to ensure optimal success of applications.
- An applicant will have two years to complete their project.
- An applicant is only eligible to apply for TCCP funding if they have completed their previously approved project.
- Outstanding projects must be completed 3 weeks prior to the first day of the primary intake date to apply for the next cycle.

Sample Timeline

- November – inquiry, preconsultation discussions
- January – intake opens for ~5 weeks
- Mid-February – intake closes
- February-March – awarding grants, providing ~3 weeks for review and preparing letters
- March-December of following year – Project starts, completion, and closeout ~ 1.5 year
- Overall, from intake to closeout would be a 2-year cycle

Parkland Related Legislative Changes

- The *Planning Act* has changed. Under subsection 42(4.1), prior to passing any bylaws to collect parkland dedication or cash in lieu of parkland, a municipality has to have a parks plan in place.
- The parks plan has to examine the need for parkland in the municipality and be in consultation with all school boards represented in the municipality along with all other persons or public bodies the municipality considers appropriate.

Proposed Intake and Deadline

- The 2024 intake for applications is proposed to open **April 29, 2024 and close May 17, 2024**
- We heard from municipalities that their preference is to have a January application/intake period, with closeout in December.
- With the change in intake/completion timelines, the first year of implementation will be less than two years, having applications approved in May 2024 and to be completed by December 2025.

In Summary

- There are 3 tiers of funding available.
- There is no guarantee funding will be awarded. It will depend on the number and size of applications received.
- Applicants can apply every year, permitting their previous project has been completed at least 3 weeks prior to intake. You are ineligible to apply if you have not reached closeout for your previous project.
- Successful applicants will have 2 years from intake to closeout to complete the project.
- If a project does not get accepted or cancelled, you can reapply another year with the same project.
- You must relinquish committed funds back to the program if you do not use them or do not complete your project. (You can always reapply again with the same project)
- The 2024 cycle commences in April and must be complete by end of December 2025, however, moving forward project intakes will open at the beginning of the year in January.



PENETANGUISHENE TRAILS COMMITTEE

AUDITS – SUMMARY REPORT

Over the summer of 2018, members of the Penetanguishene Trails Committee did an audit of a number of municipally owned trails in the Town of Penetanguishene:

- Copeland Creek Trail
- Tom Coffin Trail
- Payette Trails
- Discovery Harbour Trail
- Trans Canada Trail (from Tiny to Midland border)

The following are the observations of the committee members:

Connectivity

- While the Trans Canada Trail, the Discovery Harbour Trail and the Copeland Creek Trail are connecting trails, the Tom Coffin Trail and the Payette Trail are standalone.

Surfaces

- The trails are mostly asphalted, but some (Copeland Creek and Payette) have a natural surface or limestone screenings.

Accessibility

- Most trails can be considered accessible from an AODA perspective, with the exception perhaps of the steep hills on the Trans Canada Trail along Murray Road, Maria Road and the Main Street, and the natural surface and narrower width of the Payette Trail.

Vandalism

- Someone has removed bark from birch trees near the Copeland Creek Trail. This may cause the trees to die. Vandalism is also visible in the Overhead Bridge Tunnel

Drainage

- Significant trail washout in the Overhead Bridge area, and some wet spots on the Copeland Creek Trail (near Beacon Bay entrance), and near the pump house at Discovery Harbour.
- Potholes on the Copeland Creek Trail near the Copeland Creek sign, as well as at the Bryan Hindson Bridge.

Commented [SD1]: Drainage improvements complete

Amenities

- Recommend to place a second waste receptacle at the parkette on Beck Street (parkette that has a gazebo).

Trail maintenance

- Trimming of branches is required on the Copeland Creek Trail, Tom Coffin Trail and Payette Trail

Commented [SD2]: Completed and ongoing

- Some garbage was noticed at the end of the Copeland Creek Trail (near Champlain) and on the Payette Trail, where there is also a fire pit, which should be removed to prevent a forest fire.
- Reposition sign post on the trail at the Curling Rink, at the bottom of Owen Street. The sign has an old Trans Canada Trail logo on it and references the Tiny Trail, but does not face trail users, and should therefore be repositioned.
- Occasional inspections of the bridges and board walks on Copeland Creek are recommended, esp. the board planks.

Commented [SD3]: Removed and ongoing

Commented [SD4]: Removed and ongoing

Commented [SD5]: Trans Canada Trail signage updated twice since audit with changing logos

Commented [SD6]: Inspected weekly by summer staff. Ongoing re-education with new seasonal staff

Safety Signage

Copeland Creek Trail:

- On Champlain Road, when coming south bound, there should be an indication to “stop” before you cross the road to enter the Copeland Creek Trail.
- A stop sign is required at both sides of the Beacon Bay

Commented [SD7]: Signage project planned for 2024

Discovery Harbour Trail

- Install signage to steer trail users onto the boulevard adjacent to Beck Boulevard, where the traffic is lighter and slower (40 km/hr).

Payette Trail

- Lots of poison ivy adjacent to the trail. Perhaps install a caution “Poison Ivy” sign.

Directional signage

For the most part good., however,

- No directional signs leading to the Payette Trail (such as from Fuller Ave). The trail is therefore not well known, and is also not known to be a town trail.
- A directional sign at the Dog Park to direct users to the Copeland Creek Trail would be useful.
- Also, and “End of off-road trail. Continue on bike lane along Champlain Rd” would be useful at the end of the Copeland Creek Trail.
- There is no directional signage on Edward Street or Robert Street to the Tom Coffin Trail
- No signs at Maria & Thompson, Jeffrey and Edwards, nor at Brunelle and Murray for the TCT trail
- No directional signs along Fox Street (between Beck and Bay Moorings Marina)
- No directional sign at TCT trail entrance at Main Street (note: there is a sign at Brock and Main, i.e. at Daisy Mart), or at the fork near the “sextant” in Rotary Park.
- No directional signs at road intersections on the TCT west of Rotary Park to Tiny Trail (note: some signs are old and “wrong”)
- Signs along Discovery Harbour Trail are very small and should be larger to be visible.

Commented [SD8]: Updated to current TCT signage

Wayfinding/interpretive Signage

An interpretive sign with map is recommended for:

- Trail entrance at Rotary Park and Main Street

Commented [SD9]: Signage project planned for 2024

- Both ends of the Discovery Harbour Trail
- Payette Trail: at end of Robillard and the 2 Payette Street entrances
- On the TCT, coming from Tiny Trail
- Tom Coffin trail sign with map at Tom Coffin Park
- Copeland Creek sign at Robert Street (an old one exist closer to Champlain Road)

Commented [SD10]: completed

Other concerns and recommendations

Copeland Creek Trail

- Power raking of the limestone sections of the Copeland Creek Trail, to remove weeds and restore to full width
- Create safe crossing from Copeland Creek Trail to link with Trans Canada Trail at Park Street
- Consider creating viewing spots to Georgian Bay along the trail, and/or build a boardwalk across the wetland from parking lot at the water dispensing station.

Discovery Harbour Trail

- Widen the trail by 1 or 2 feet along Fox Street from Beck Blvd to Broad Street
- Trail ends abruptly at the northern end (Discovery Harbour grounds), approx. 10 to 20 ft short of the entrance road. There is also no entrance / exit signage noted on the trail or the road. Would be great if Discovery Harbour and/or Town could continue the hard surface trail another 10 to 20 ft to the road and erect trail signage.

Trans Canada Trail (Curling Rink to Tiny)

- Overhead Bridge Tunnel is unsafe: lack of lighting, wet areas and loose gravel that are hard to see in the dark tunnel, insufficient parking at times, steep grade to the trail, significant erosion on banks leading to the tunnel. Lighting, proper under the bridge drainage, and parking are urgently needed.
- Create safe crossings as follows at Robert Street:
 - when east bound: continue along south side of Robert Street at Centre Street and create a major crossing and gateway to Rotary Park
 - Park St: create new trail extension north to the Copeland Creek, crossing Robert St at Safe Crossing Walk

Commented [SD11]: Tunnel & trailhead improvements complete

Commented [SD12]: complete

Summary notes prepared by Frieda Baldwin Nov 27, 2018

From: [steevesfamily steevesfamily](#)
To: [Sherry Desjardins](#)
Subject: Fwd: Re: Trails audit day
Date: June 29, 2022 9:36:04 AM
Attachments: [PXL_20220628_153909813.ipq](#)
[PXL_20220628_154314563.ipq](#)
[PXL_20220628_153925714.ipq](#)

good morning, just wanting to share the rotary park trail audit that Karen and I did yesterday. We started at Main Street, we have taken alot of pictures breaking this out into 3 emails if that is okay.

To start the only signage for the Great Lake, Trans Canada, is on the sidewalk attached to light pole close to the boat launch entrance. Not visible waking from the town dock. The gardens beside the Kitchekewana statue if wonderful, lots of benches, picnic table, however the fountain is not working.

Rotary park sign not visible you have to be right in front, and for some reason the Philip Jones sign is almost beside it, so confusing as the parking for the rotary is behind the pollution control plant sign.

recommend better signs and positioning so visitors and residents have a clear picture of where our park is. It is such a beautiful park, its a shame that many may miss it.

From: [steevesfamily steevesfamily](#)
To: [Sherry Desjardins](#)
Subject: Fwd: Re: Trails audit day
Date: June 29, 2022 9:43:23 AM
Attachments: [PXL_20220628_154345832.ipq](#)
[PXL_20220628_155447704.ipq](#)
[PXL_20220628_155451063.ipq](#)

Tree dedication and memorial garden, signs over grown, the paths to the gazebo need gravel and trimming, and the gazebo itself needs to be painted. There is also a sculpture need of repair. Not sure if this is the rotarys responsibility.

It is such a lovely spot, honestly did not know this existed.

Denise and Karen

From: [steevesfamily steevesfamily](#)
To: [Sherry Desjardins](#)
Subject: Fwd: Re: Trails audit day
Date: June 29, 2022 9:49:53 AM
Attachments: [PXL_20220628_155528096.ipq](#)
[PXL_20220628_155655539.ipq](#)
[PXL_20220628_160014120.ipq](#)

Neglected stone chip path to Rotary club gazebo and memorial garden, old signs difficult to read and large sign could be smaller and consistent with new signage. Perhaps use roof of sign for birds, bats, butterflies and bee houses???

No signage at the pond lookout, and the deck needs to be fixed, loose boards, the area also needs to be trimmed

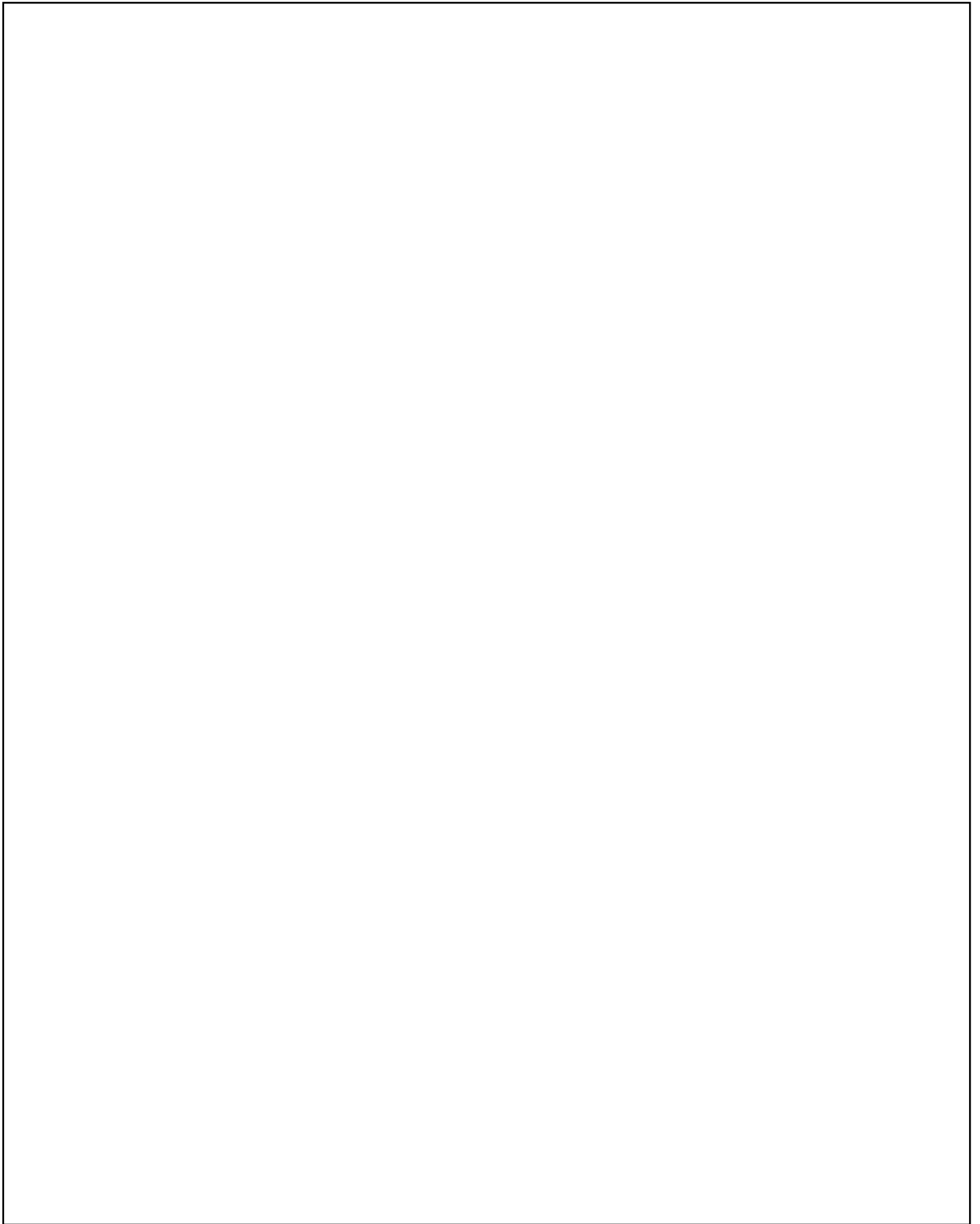
Dock signage for boaters could include symbols like...

- ...food/picnic area
- ...washroom
- ... waterpark
- ...bike rack
- ... beach
- ...dog park
- ... skateboard park

we only walked as far as the curling rink as we had already submitted a report for the rest of the park.

Regards

Karen and Denise



PENETANGUISHENE TRAILS COMMITTEE

TRAILS CHECKLIST

Date of Visit: June 13, 2022

Conducted by: Roy, Sherry, Jess, Karen, Denise, Mary

Trail Name: Copeland Trail

Trail Location: Robert St W / Champlain

Trail Length/Distance: ~ 2km ?

Trail width: variable up to 5ft

Connecting Trail or Stand Alone Trail?

TRAIL SURFACE

(CURRENT) Asphalt ___ Screenings X Natural ___

Current Condition: Excellent ___ Very Good ___ Good X Fair ___ Poor ___

Suggested Upgrades: boardwalk needs work, culverts to manage overflows, erosion in areas and more gravel is needed in spots

SIGNAGE

Existing Signs: Yes X* No ___

*nothing at parking area; Great Lakes Waterfront Trail sign hidden on tree between parking area and trail

If Yes, please complete the following: Yes No Condition Location

Trail Name ___ X ___ _post just before boardwalk ___

Rules X ___ faded ___ " ___

Directions ___ X ___ " ___

Other:

Covid sign can be removed, Marina crossing warnings, bike lane sign damaged at Hindsons

AMENITIES (indicate numbers in Yes)

ITEM	Yes	No	Suggestion (if No)
Benches	___	<u>X</u>	_one at trailhead_____
Picnic Tables	___	<u>X</u>	_____
Waste Receptacles	___	<u>X</u>	_one at parking area_____

Bike Racks ___ ___ _ one at trailhead _____

Washrooms ___ ___ _____

Lights ___ ___ _____

Parking Area ___ ___ _____

Other: _____

Coloured shapes and symbols on trail map to match trail blazes

ISSUES

Yes No Description

(are any of the following problem)

Vandalism ___ ___ _ "Too Alive" stickers? _____

Sight Lines ___ ___ _____

Accessibility ___ ___ _____

Drainage ___ ___ culverts/more screenings needed for wet areas

Trees/Shrubs/Vegetation ___ ___ ___ _needs to be trimmed back/phragmites

Bridges/Boardwalks ___ ___ ___ soft areas;bridge railings could use paint

Culverts ___ ___ _needed _____

Other _____

OTHER NOTES

Yes No Description/Suggestions

Connectivity (to other trails) ___ ___ ___ pedestrian crossing at Park St ideal _____

Viewing area ___ ___ _wish list item! _____

Barricades/Bollards ___ ___ _boulders at intersections are great _____

Other _____

USERS OBSERVED DURING VISIT (numbers)

Hikers ___ Joggers ___ Adults with baby strollers ___ Cyclists ___ Walkers _____

Rollerbladers ___ Skateboarders ___ Mobility Devices ___ Other :

Comments/Suggestions/Complaints/Likes of Users

OTHER GENERAL COMMENTS/OBSERVATIONS

- Crossing at marina (safety signage)

- Get printed trail maps at marinas
- Signage missing coming from Champlain side
- Use TCT common terminology

PENETANGUISHENE TRAILS COMMITTEE

TRAILS CHECKLIST

Date of Visit: June 20, 2022

Conducted by: Jess, Mary

Trail Name: TCT Trail

Trail Location: Town Dock to Murray Road

Trail Length/Distance: not a trail, uses the sidewalk/road

Trail width: variable

Connecting Trail or Stand Alone Trail?

TRAIL SURFACE

(CURRENT) Asphalt Screenings _____ Natural _____

Current Condition: Excellent ___ Very Good ___ Good Fair Poor ___

Suggested Upgrades: boardwalk needs work, culverts to manage overflows, erosion in areas and more gravel is needed in spots

SIGNAGE

Existing Signs: Yes No _____

If Yes, please complete the following: Yes No Condition Location

Trail Name _____ _____ _____

Rules _____ _____

Directions _____ _____ _____ only at Town Dock

Other:

- Main & Thompson (old signage) directs in wrong way to Main St
- Signage at Main says "Great Trail"
- At Town Dock, TIF office Great Lake sign
- TCT at Maria (very small and opposite side of the road)
- No sign and sidewalk ends at Maria and Edward intersection
- Signage often bounces from one side of the street to the other
- Signage/map opportunity on Community Notice Board at Main/Robert corner
- Snowmobile signage confusion

AMENITIES (indicate numbers in Yes)

ITEM	Yes	No	Suggestion (if No)
Benches	<input checked="" type="checkbox"/>	<input type="checkbox"/>	___ Main St _____
Picnic Tables	<input checked="" type="checkbox"/>	<input type="checkbox"/>	___ Dock only _____
Waste Receptacles	<input checked="" type="checkbox"/>	<input type="checkbox"/>	___ Dock only _____
Bike Racks	<input type="checkbox"/>	<input type="checkbox"/>	_____
Washrooms	<input checked="" type="checkbox"/>	<input type="checkbox"/>	___ Dock only _____
Lights	<input type="checkbox"/>	<input checked="" type="checkbox"/>	_____
Parking Area	<input checked="" type="checkbox"/>	<input type="checkbox"/>	___ Dock _____
Other:			

ISSUES

(are any of the following problem)

	Yes	No	Description
Vandalism	<input type="checkbox"/>	<input checked="" type="checkbox"/>	_____
Sight Lines	<input type="checkbox"/>	<input checked="" type="checkbox"/>	_____
Accessibility	<input checked="" type="checkbox"/>	<input type="checkbox"/>	except confusing signage back and forth on sides of street
Drainage	<input type="checkbox"/>	<input checked="" type="checkbox"/>	_____
Trees/Shrubs/Vegetation	<input checked="" type="checkbox"/>	<input type="checkbox"/>	_____
Bridges/Boardwalks	<input type="checkbox"/>	<input checked="" type="checkbox"/>	_____
Culverts	<input type="checkbox"/>	<input type="checkbox"/>	_____
Other _____	<input type="checkbox"/>	<input type="checkbox"/>	_____

OTHER NOTES

	Yes	No	Description/Suggestions
Connectivity (to other trails)	<input type="checkbox"/>	<input type="checkbox"/>	? _____
Viewing area	<input type="checkbox"/>	<input type="checkbox"/>	_____
Barricades/Bollards	<input type="checkbox"/>	<input type="checkbox"/>	_____
Other _____	<input type="checkbox"/>	<input type="checkbox"/>	_____

USERS OBSERVED DURING VISIT (numbers)

Hikers ____ Joggers__ Adults with baby strollers____ Cyclists____ Walkers __✓__

Rollerbladers__ Skateboarders____ Mobility Devices____ Other :

Comments/Suggestions/Complaints/Likes of Users

OTHER GENERAL COMMENTS/OBSERVATIONS

Pedestrian crossing improvements needed at Maria/Edward

Line painting updates

PENETANGUISHENE TRAILS COMMITTEE

TRAILS CHECKLIST

Committee Member Name: Karen Chaplin & Denise Steeves

Date of Visit: June 23, 2022

Trail Name: Rotary Park to Overhead Bridge

Trail Location : Town Dock, behind Water treatment plant along waterfront (we called it Route Champlain Lake path)

Trail Length/Distance: ??

Trail Width: less than 1 metre

Connecting Trail or Stand Alone Trail? Connecting to main Rotary Trail

TRAIL SURFACE

(CURRENT) Asphalt no Screenings Yes Natural Yes

Current Condition: Good

Suggested Upgrades: signage to indicate 2 distinct trails?? Gravel/natural versus Rotary which is asphalt; sign from boat ramp parking lot would be helpful at the start of the route

SIGNAGE

Existing Signs: Not for the natural waterfront trail except for historic plaque "Route Champlain"

If Yes, please complete the following: Yes No Condition Location

Trail Name _____

Rules _____

Directions _____

Other(_____)

AMENITIES (indicate numbers in Yes)

ITEM	Yes	No	Suggestion (if No)
Benches	***	___	benches no longer have water view-too overgrown Park bench labeled "Midland Curling (sp???) Club" missing a wood seat-not safe
Picnic Tables	***	___	_____
Waste Receptacles	***	___	_____
Bike Racks	***	___	_____

Washrooms *** ___ _____

Lights *** ___ none inside the tunnel at Overhead bridge

Parking Area *** ___ _____

Other (-----) ___ ___ _____

ISSUES

Yes No Description

(are any of the following problem)

Vandalism ___ *** _____

Sight Lines *** ___ if crossing overhead bridge road, view
Obstructed; dangerous crossing at corner

Accessibility *** ___ some areas narrow with soft stone chips

Drainage *** ___ approaching overhead bridge, culvert full
Of sand

Trees/Shrubs/Vegetation *** ___ _____

Bridges/Boardwalks *** ___ bridge surface needs repair west of the
Sign "Route Champlain"

Culverts *** ___ _____

Other _____ ___ ___ _____

OTHER NOTES

Yes No Description/Suggestions

Connectivity (to other trails) *** ___ Rotary Park joins 'Champlain Route" to Tiny Rail

Viewing area *** ___ Pond viewing area no sign, overgrown, needs repair

Barricades/Bollards ___ *** _____

Other _____ ___ ___ _____

USERS OBSERVED DURING VISIT (numbers)

Hikers *** Joggers___ Adults with baby strollers *** Cyclists *** Walkers ***

Rollerbladers___ Skateboarders *** Mobility Devices___ Other :

Comments/Suggestions/Complaints/Likes of Users

OTHER GENERAL COMMENTS/OBSERVATIONS

1. Snowmobile stop sign down just east of park St.
2. Broken bench under the willow tree near Ojibway Landing
3. Broken asphalt needs repair after the playground west of Park St.
4. So many signs at Overhead Bridge...it's so confusing
5. No signage for teepee or native historical installations
6. Not sure where to park as we approach Rotary Park from Main street. Parking seems to be at the Treatment Plant. Treatment plant sign stands out, but Rotary Park sign not noticed, and no parking signage for the park.
7. Tent (encampment) behind Treatment Plant has been there for over a week with someone inside
8. A streetlight along the path at the "Stormwater" sign was on at 4pm during the day
9. Benches at the Greek food truck-no indicators if they are part of the truck rental property or town??
10. Dock signage for boaters

PENETANGUISHENE TRAILS COMMITTEE

TRAILS CHECKLIST

Committee Member Name:

Date of Visit:

Trail Name:

Trail Location :

Trail Length/Distance:

Trail Width _____

Connecting Trail or Stand Alone Trail?

TRAIL SURFACE

(CURRENT) Asphalt ___ Screenings _____ Natural ___

Current Condition: Excellent ___ Very Good ___ Good ___ Fair ___ Poor ___

Suggested Upgrades:

SIGNAGE

Existing Signs: Yes ___ No ___

If Yes, please complete the following: Yes No Condition Location

Trail Name _____

Rules _____

Directions _____

Other(_____)

AMENITIES (indicate numbers in Yes)

ITEM	Yes	No	Suggestion (if No)
Benches	___	___	_____
Picnic Tables	___	___	_____
Waste Receptacles	___	___	_____
Bike Racks	___	___	_____
Washrooms	___	___	_____
Lights	___	___	_____
Parking Area	___	___	_____

Other (-----) _____

ISSUES

Yes No Description

(are any of the following problem)

Vandalism _____

Sight Lines _____

Accessibility _____

Drainage _____

Trees/Shrubs/Vegetation _____

Bridges/Boardwalks _____

Culverts _____

Other _____

OTHER NOTES

Yes No Description/Suggestions

Connectivity (to other trails) _____

Viewing area _____

Barricades/Bollards _____

Other _____

USERS OBSERVED DURING VISIT (numbers)

Hikers ____ Joggers__ Adults with baby strollers____ Cyclists____ Walkers _____

Rollerbladers__ Skateboarders__ Mobility Devices__ Other :

Comments/Suggestions/Complaints/Likes of Users

OTHER GENERAL COMMENTS/OBSERVATIONS



Trails Advisory Committee Work Plan 2024

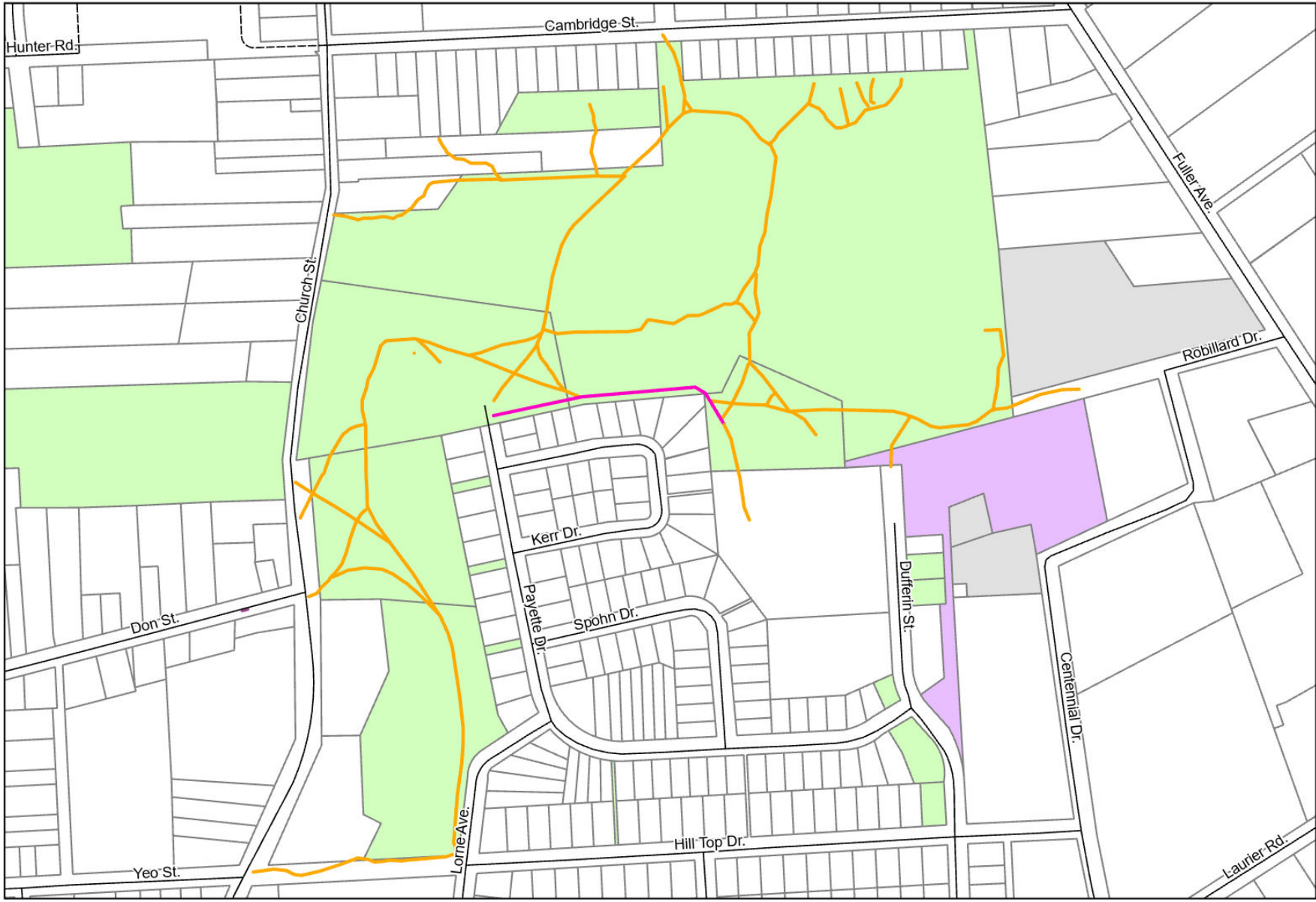
	Key Agenda Items / Activities	Q1 (Jan, Feb, Mar)	Q2 (Apr, May, Jun)	Q3 (July, Aug, Sep)	Q4 (Oct, Nov, Dec)	As Required
1.	Signage -standards & capital planning -add QR code	Two grant submissions				
2.	ATV use -receive information about local rules and regulations	-municipal by-law enforcement made presentation				
3.	Snowmobile use -receive information about the local snowmobile club					
4.	Active Transportation Initiatives -advise on and support Town events and programs that promote active transportation		Consultation at April committee meeting with Recreation & Events			
5.	Familiarisation walk/ride event -highlight different trails through a series (ToP or NS initiative) -opportunity to share other info					
6.	Payette Trail -make recommendations for 2025 capital project -develop signage plan		June meeting on site at Payette Trails			

7.	Maintain a 'wish list' of projects -items not to lose site of or consider for grant opportunities -review past trail audits					
8.	E-Bikes/pedal assist -continue to monitor trends -support community education -consider policy recommendations for Council		Speaker booked for Senior's Information Day			
9.	Develop 2025 Work Plan					



Town of Penetanguishene

- Trails
TYPE
— Asphalt
— <all other values>



Town of Penetanguishene

- | | | |
|--------------------|------------------------------|--------------------|
| Trails | Town Owned Properties | <all other values> |
| TYPE | OPDesi | |
| Asphalt | Employment Area | |
| <all other values> | Neighbourhood Area | |



TRAILS DAY CELEBRATION



JUNE 1, 2024
10:00 AM - 2:00 PM

**STARTING FROM ÉCOLE SECONDAIRE
LE CARON (22 JOHN STREET)**

CONTINUE FOR A GUIDED HIKE ON THE
THOMPSON TRACT IN THE SIMCOE COUNTY
FOREST

**THREE
GUIDED
HIKES**

**GUIDED
MOUNTAIN
BIKE RIDES**

**BIKE
RODEO**

10:00 AM Seniors Hike
10:30 AM Long Hike
11:00 AM Short Hike

**FREE BIKE RODEO
REGISTRATION**
TOP RECREATION.COM

2024

Annual Board and Committee Appreciation Event November 27th,
Page 56 of 56



*Town of / Ville de
Penetanguishene*

ANNUAL BOARD AND
COMMITTEE
APPRECIATION EVENT

**NOVEMBER
27
2024**

Penetanguishene Legion
Start at 5:30pm
Dinner at 6:00pm



**SAVE
THE
DATE**